



ABN: 33 086 302552

Step1: **Installation** of the Netc Label System (NetcSetupXXXX.exe)

1. The installation program must run as administrator and
2. The installation must run as a 32 bit application

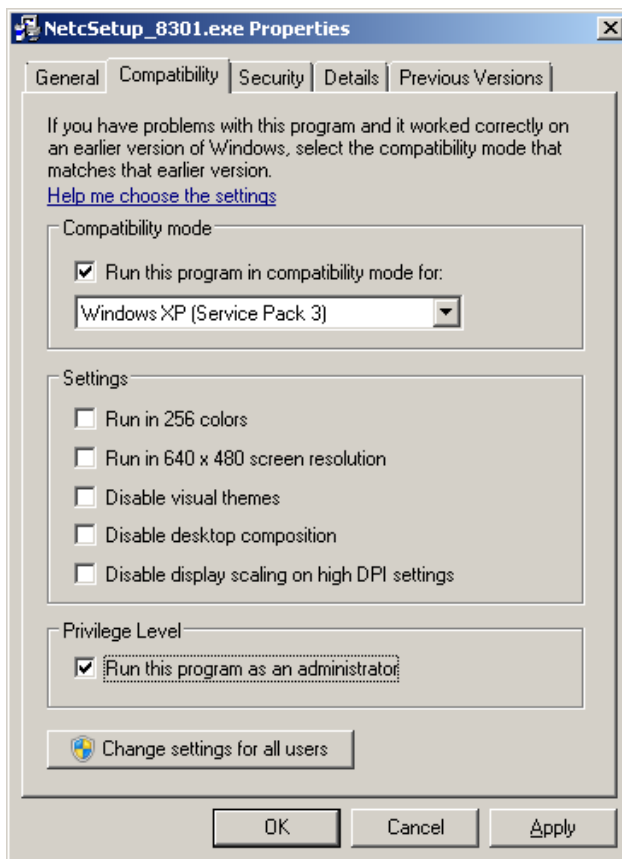
(Otherwise there is a risk the Wyse system may pick up 64 bit dll instead of the needed 32 bit dll and fail).

Below is the screen shot of the properties page of the install program as seen from Windows 7/8.

Note 1: The properties page is accessed by right clicking the NetcSetupxxxx.exe

Note 2: To apply these setting the user should copy the installation program to their local drive and be in the Admin group.

Note 3: Both the **Run this program as administrator** and the **Windows XP (Service pack 3)** compatibility mode are selected.



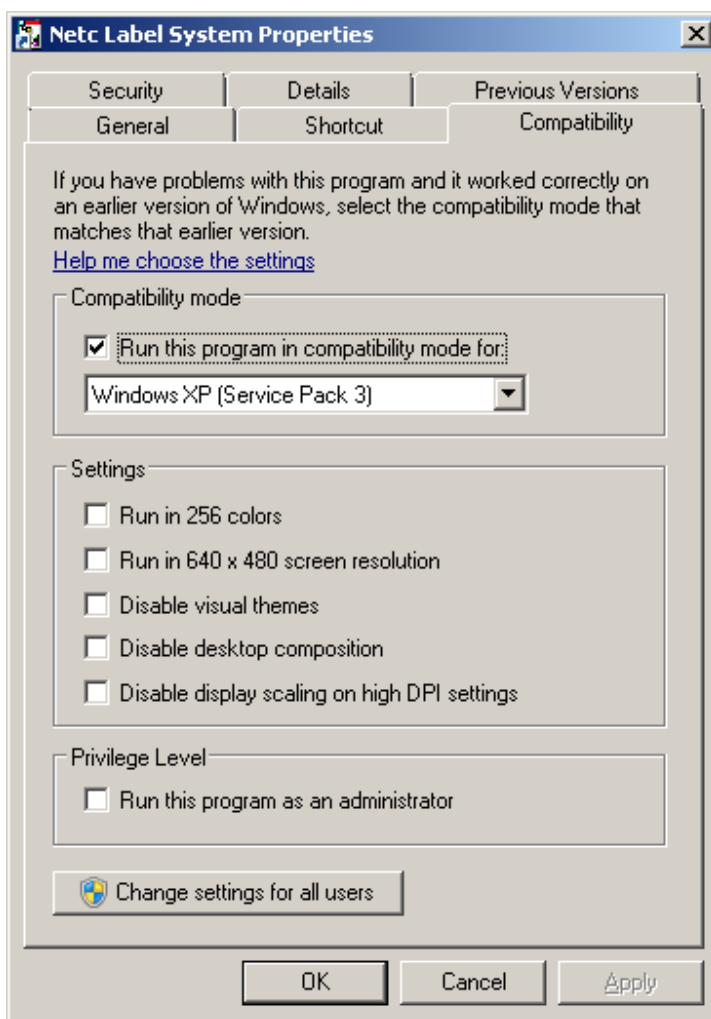


ABN: 33 086 302552

Step 2: **Running** the Netc Label System (C:\Netc\Netc.exe),

1. The user should select the **Windows XP compatibility** mode as shown in the screen shot below, (Run as Admin is not required).

Note: The properties page is accessed by right clicking the Netc.exe, either the shortcut icon or from its folder -normally in the folder c:\Netc





ABN: 33 086 302552

Special consideration if the install pauses on installing the fonts

There is a special download of the install at

<http://www.netcllc.com/update83NoFonts.html>

If the user was doing an update and they already had the special Netc fonts (ex: OCRA, etc), then the above install is all that is needed. If this is an initial install, then the user should manually copy (as an admin) the 7 actual fonts to the system font folder (normally C:\WINDOWS\Fonts).